



# Technical Information Packet

3/1/202

## Strand Theater

543 Columbia Road  
Dorchester, MA 02125  
(617) 635-1403  
www.strandboston.com

**The Strand Theatre** is a restored vaudeville house located in Uphams Corner in Dorchester, Massachusetts. It is owned by the City of Boston and managed by the Office of Arts and Culture. Building facility management is handled by the Department of Neighborhood Development.

The Strand opened on November 11, 1918, in celebration of Armistice Day – the end of World War I. It originally presented live performances and silent films. The Strand features one of the first Wurlitzer theater organs in America, now on display in our lower lobby.

This technical information packet serves to orient new and returning clients to the space. It is divided into the following sections:

### General Information FOH / Box Office

*Directions and parking  
Box office; concessions; seating;  
accessibility concerns; lobby dimensions*

### Production Management Support Spaces

*Crews; policies; special effects; storage*

### Carpentry

*Loading dock and truck access; crossover and wing space*

### Rigging

*Stage dimensions, company power; work access; stage floor, dance floor, and orchestra pit*

### Lighting

*Flyhouse; lineset schedule; stage weight; soft goods inventory*

### Audio

*Power; control; house lights; work lights; run lights; FOH lighting positions*

### Projection

*PA System; control locations; audio inventory; rep speaker layout; production intercom*

### Props

*Projector and screen*

### Wardrobe

*Tech tables; props tables; lectern; music stands and music stand lights*

### Attachments

*Dressing rooms; garment racks; laundry and dry cleaning*

*A – Policy handbooks, including Emergency Evacuation Plan*

*B1-B3 – Seating chart*

*C/D – Groundplan and centerline section*

*E – Lineset schedule*

*F – Repertory lighting plot*

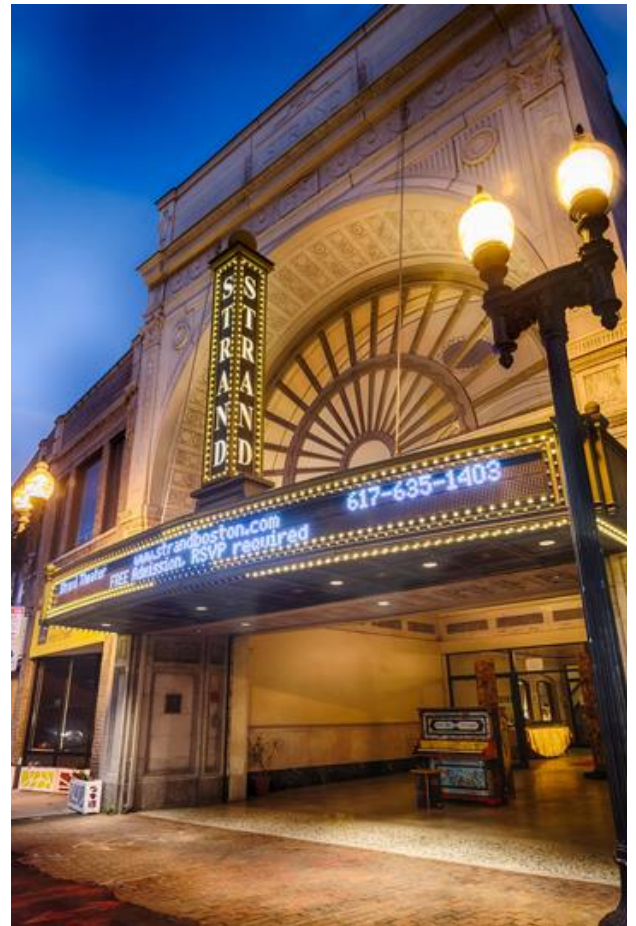
*G – Lighting inventory*

*H – Repertory speaker layout*

*I – Audio inventory*

*J – Intercom inventory*

*Strand Theater – 543 Columbia Road – Dorchester, MA 02125*



# Technical Information Packet





# Technical Information Packet

## General Information

The Upham's Corner business district is part of the Dorchester North section of Boston, home to a diverse mix of people, including African American, Cape Verdean, Haitian, Hispanic, white, and Asian populations. Of the residents living within a mile of Upham's Corner, about 43% are Black, 22% white, and 19% Hispanic. There are a mix of small businesses and community organizations in storefronts along the blocks on either side of the theater on Columbia Road, while Wilbur Street is largely residential.

The Strand Theater is located at 543 Columbia Road, Dorchester, Massachusetts. The main lobby is accessible through Columbia Road. The upper lobby / rear of house entrance is off Wilbur Street, as is the stage door. The loading dock is accessible through the parking lot off Cushing Avenue.

**No doors to the theater may be left propped open. Visiting companies should assign one person to act as a point of contact to let other members of the company into the building.**

## Driving Directions

*As of summer 2021, the exit numbers on I-90 (Mass Pike) and Rte. 93 (the Expressway) have changed.*

**From South:** Take I-93 North to exit 14 (*old exit 15*), Columbia Road. Left at the bottom of ramp to third set of lights. There is a 12-foot bronze pear statue on the corner (created by sculptor Laura Baring-Gould). Turn left onto Columbia Road. Go through two sets of lights; the Strand is on the left, just past Bank of America.

**From North:** Take I-93 South to exit 14 (*old exit 15*), Columbia Road. Right at the bottom of ramp to third set of lights. There is a 12-foot bronze pear statue on the corner (created by sculptor Laura Baring-Gould). Turn left onto Columbia Road. Go through two sets of lights, the Strand is on the left, just past Bank of America.

**From West:** Take the Mass Pike (I-90) east into Boston, to I-93 south. Follow "From North" directions.

**From Jamaica Plain/ Brookline:** Take the Jamaicaway south to the Arborway. Keep straight to the rotary. Go 3/4 around the rotary and turn into Franklin Park. Go through the park, and turn left onto Blue Hill Avenue. Go about 50 yards, then make a right onto Columbia Road. The Strand is about 1-1/2 miles (2.4 km) down on the right, just past the Frugal Furniture.

## Public Transportation

**Red Line:** Get off at Andrew station. Take the #16 (Forest Hills) or #17 (Field's Corner) bus to Upham's Corner/Dudley Street. Get off in front of Payless Shoe Store. The Strand is up one block on the left, just past Bank of America.

**Orange Line (Ruggles Station):** Take the #15 (Upham's Corner) bus via Dudley Station. Get off in front of Get off in front of Payless Shoe Store. The Strand is up one block on the left, just past Bank of America.

**Orange Line (Forest Hills Station):** Take the #16 (Forest Hills) or #17 (Field's Corner) bus to Upham's Corner/Dudley Street. Get off in front of Payless Shoe Store. The Strand is up one block on the left, just past Bank of America.



# Technical Information Packet

## **Parking**

The parking lot off Cushing Avenue is able to accommodate (2) 26-foot box trucks or (2) tour buses. This will allow visiting companies to load in equipment through the loading dock directly into the theater. It is difficult but not impossible to navigate a 53' semi trailer to the loading dock. Doing so will require advance notice and a police detail for the load in and load out. Other company vehicles may park in the parking lot near the loading dock.

On street parking for non-commercial vehicles is also available on Columbia Road and the adjacent side streets.

There are three additional non-metered parking lots in a one-block radius of the Strand Theater. Additional free parking is also available in the Santander Bank lot is located in the rear of the bank at 585 Columbia Road, as well as behind the Dorchester Bank building across the street on Columbia Road. A little further from the theater, free off-street parking is available in the Ramsey Street Municipal lot. Ramsey Street is located at the intersection of Dudley Street and Columbia Road behind CVS Pharmacy and Payless Shoes.



## Front of House / Box Office

Front of house staff (box office, ticket takers, ushers and security detail) may be arranged through the Strand.

The box office is located in the front lobby off Columbia Road. There are two windows (pick-up/will-call and ticket sales). Hours are determined by the lessee.



### Lower Lobby

The lower lobby is divided into four areas: The box office lobby, the Hall of Mirrors (entryway lobby), the main lobby, and the art gallery.

The box office lobby is trapezoid in shape. It measures 26'2" feet wide (8 m) along the doors. It measures 23'2" deep (7.05 m) along the box office windows, but only 18' (5.5 m) along the opposite side. The ceiling is 11' high (3.3 m) not including the chandelier.

The Hall of Mirrors is 25' wide by 40' deep (7.6 x 12.2 m), or 1,150 sq. ft. There are stairs to the reception lobby and rear of the house located here. This area is often used for ticketing and merchandise sales.

The main lobby is 18' wide by 74' deep (5.5 x 22.875 m). The coffered ceiling ranges between 7'3" and 8'10" high (2.2 – 2.7 m). The concession stand and both entrances to the theater auditorium are located here.

The lower gallery offers display space for local artists and artisans. It may also be used as a rehearsal space or reception area. There are both men's and women's restrooms here. The gallery is 18' w x 47' d (5.5 x 14.33 m) or 1,100 sq. ft. and the ceiling is 9'6" high (2.8 m). The maximum occupancy of this room is 40 people. This number may be reduced if there are tables and chairs used for events.



### Upper Lobby

The upper lobby is divided into the reception lobby and the outer lobby.

The reception lobby measures 26' by 36' (8 x 11 m) or 1,625 sq. ft. The lowest point of the ceiling is 11' high, with recessed portions being 12'9" high. For events held in this area, the maximum occupancy is 80 people. This number may be reduced if there are tables and chairs used for events.

The mezzanine lobby exits onto the staff parking lot on Wilbur Street. There are both men's and women's restrooms here. It is 17' w x 46' d (5.18 x 14 m) and the ceiling is 8' high (2.44 m).

# Technical Information Packet

## Seating

The theater seats over 1400 people, divided into three general sections: the orchestra, the mezzanine, and the balcony. (Please also refer to Attachment B1 – B3, Seating Chart.) There is a passenger elevator to all three levels.

### Orchestra

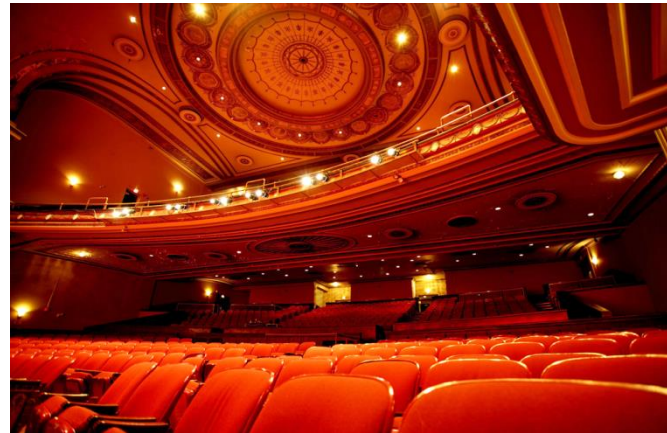
There are 285 seats in the orchestra section, plus an ADA section capable of seating two people in wheelchairs plus one attendant each, or ten people in standard chairs. End row wheelchair seating is at the discretion of the presenter.

### Mezzanine

There are 502 seats in the mezzanine section, plus four ADA sections capable of seating a total of ten people in wheelchairs plus attendants.

### Balcony

There are 272 seats in the lower balcony, plus four ADA sections capable of seating one person in a wheelchair and one attendant each. There are an additional 374 seats in the upper balcony.



## Security

Security for each event is arranged through 1<sup>st</sup> Armor Security.

## Catering and Other Concessions

Catered receptions may be made through arrangement with Strand management. Catering companies must be ServSafe certified, and must clear all equipment (chafing racks, etc.) at the end of the event. A liquor license and liquor liability insurance is required for the sale of alcohol.

The Strand Concession Stand is located midway through the lower lobby level. The Concession Stand is operated by Strand staff during all events.

## Merchandise

Merchandise tables and chairs may be set up in the lower lobby or upper lobby at the request of the client. Tables and chairs may not block access to egress doors or theater aisles.

## Accessibility Concerns

The Strand main lobby entrance is at street level off Columbia Road, and both entrances to the auditorium are ramped. Access to the balcony levels is available by a passenger elevator, which has stops at the ground level, rear of the mezzanine seating, and rear of the lower mezzanine level.

Handicap access to the stage is through a ramp on the house left side of the auditorium.

Assisted listening devices are available upon request.



# Technical Information Packet

## Technical Services

### Lighting Equipment Rental

4 Wall Rentals  
125 Shawmut Road  
Canton, MA 02021  
[www.4wall.com/contact/boston](http://www.4wall.com/contact/boston)  
866-961-3066

### Audio Equipment Rental

Audio Spectrum  
50 Mazzeo Drive  
Randolph, MA 02368  
[www.audiospectrum.com](http://www.audiospectrum.com)  
(781) 767-1331

### Instrument/Backline Rental

Bergsten Music  
85 Research Road  
Hingham, MA 02043  
[www.bergstenmusic.com](http://www.bergstenmusic.com)  
(781) 740-6600

### Scene Shop / Construction

Wooden Kiwi Productions  
99 Hammond Street  
Waltham, MA 02451  
[www.woodenkiwi.com](http://www.woodenkiwi.com)  
(781) 209-2623

### Area Hotels

#### Courtyard by Marriott

63R Boston Street  
Boston, MA 02115  
(617) 436-8200

#### Holiday Inn Express

69 Boston Street  
Boston, MA 02115  
(617) 288-3030

#### DoubleTree Club

240 Mt. Vernon Street  
Boston, MA 02125  
(617) 822-3600

### Taxi Services

The Upham's Corner neighborhood is well supported by Uber, Lyft, and Safr.



# Technical Information Packet

## Local Restaurants

Boston Pizza and Grill is immediately to the left as you exit the Strand lobby. Upham's House of Pizza is almost directly across the street.

Other nearby restaurants include an Applebee's and an Olive Garden at the South Bay Shopping Center; and Victoria's Diner on Massachusetts Avenue.

## Emergency Services

For all emergencies, dial 911.

For non-emergency situations:

### **Boston Police Department**

Precinct C-11 (Dorchester)  
40 Gibson Street  
617-343-4330

### **Boston Fire Department**

Engine 21  
641 Columbia Road

### **Craney Hospital**

2100 Dorchester Avenue  
617 296-4000

### **Boston Medical Center**

One Boston Medical Center Place  
(617) 638-8000

### **ProEx Physical Therapy**

811 Massachusetts Avenue  
(617) 445-1177





# Technical Information Packet

## Production Management

### Crews

The Strand is a non-union house. All crews are hired through the Strand technical director. Additional hands may be hired through Local 11 (IATSE) if necessary. All crews are scheduled for the duration of the call. Crews are hired for a four-hour minimum, and will be given a 10 minute break every two hours, and a meal break every four hours.

The Strand Technical Director must be present at all times the facility is in use. The Strand Technical Director has the authority to halt work or remove workers from the site if a safety issue arises.

### Policies

Owned by the City of Boston, the Strand follows all City policies. The Strand is an equal opportunity employer.

Persons under the influence of alcohol or drugs will not be permitted backstage. Smoking is prohibited on all City of Boston properties.

Damage to the premises, equipment or property of the Strand Theater or its staff will be paid for by the renter.

### Special Effects

Pyrotechnic effects are strictly prohibited. Dry ice fog may be used with prior approval by the technical director. Other atmospheric effects such as haze and mist require a permit from the Boston Fire Department, and will require both a Fire Department detail and a fire alarm technician to deactivate and reactivate the fire alarm. The detail and technician must be hired during the entire period haze or mist is used in the theater. The cost of the detail and technician will be borne by the client.

Audiences must be alerted before the show to strobes, flashing lights, and loud noises such as gunshots. This may be accomplished through signage in the lobby and auditorium, notices in the printed program, and/or verbal warnings by house ushers.

### Storage

Storage at the Strand is extremely limited. Companies may use the loading dock for storage. Wing space is extremely limited, and roadcases may not block egresses, the fly rail (stage right) or utility services (stage left). Some storage in the concession stand area may be permitted, depending on the size of the objects being stored.

# Technical Information Packet

## Support Spaces

### Loading Dock and Truck Access

Trucks may access the loading dock through the bank parking lot off of Cushing Avenue. This is only accessible through the southbound lane on Columbia Road. The parking lot allows up to a 26' box truck to back up to the loading dock. A larger truck will require a police detail to handle traffic.

The loading dock is approximately 6' (1.8m) above grade of the parking lot. This limits the use of lift gates and forklifts. The Strand can provide a short (3' x 6') loading dock ramp.

The loading dock is also accessible by a side alley off Wilbur Street. This is ideal for vans, pick-up trucks, or other small deliveries. The alley has a drivable width of 9'0". The alley is sloped downward, but level at the loading dock door.

The outside loading dock doors measure 8'0" high by 9'9" wide (2.4 x 2.9m). The loading dock doors open into the "airlock," an unheated room approximately 12' by 12' by 12'. From there, access is immediately into the upstage right wing through another set of doors, also measuring 8'0' high by 9'9" wide.

### Stage Access and Crossover

The cyc cannot be placed closer than 4'0" to the upstage wall (Lineset 21). This should also provide a crossover space for actors. Performers can also use the downstairs green room as a crossover space. Care should be taken to prevent light from spilling from the back hallway onto the cyc or stage.

When any of the backstage doors are opened (by the loading dock or onto Wilbur Street), a large draft is created which both pulls heat out of the building and creates a large enough air current to distort the main curtain. Care should be taken to keep these doors closed at all times.



# Technical Information Packet

## Carpentry

### Stage Measurements

Proscenium opening SL to SR: 38' (11.58m)  
Front of balcony rail to plaster line Center: 40' (12.2 m)  
Plaster line to back wall: 27'-8" (8.4m)  
Back wall to center of apron: 41'-10" (12.75m)  
Main drape maximum trim height: 18' (5.46m)

Stage right wing depth: 14'-0"  
Stage left wing depth: 16'-0"  
Stage right lock rail to centerline: 36'-0" (DS), 34'6" (US)  
Stage right lock rail to stage left cage: 67'-0"

Plaster line to first row of seating: 17'-0"  
Plaster line to last row of orchestra seating: 46'-0"  
Plaster line to back of mezzanine: 86'-0"  
Plaster line to first row of balcony seating: 41'-3"  
Plaster line to follows pot booth: 100'-0"

Balcony overhangs orchestra at row H

Please see the Strand ground plan (Attachment C) and centerline section (Attachment D) for other dimensions. AutoCAD and Vectorworks drawings are available at the client's request.

### Company Power

There are two company switches located stage left at stage level.

(1) 200A three-phase service cam-lock - *Reverse Ground/Double Neutral*. MMFFF

(1) 400A three-phase service cam-lock - *Reverse Ground/Double Neutral* MMFFF

Visiting companies must speak with a Strand supervisor before tying in power.

### Work Access

- 1 Genie AWP 36S personnel lift (*working height, 36'*)
- 1 24' extension ladder
- 2 16' extension ladder (*for box boom positions*)
- 1 12' step ladder
- 3 8' step ladder
- 1 6' step ladder
- 2 6 – 9' adjustable step ladders

# Technical Information Packet

## Stage Floor

The stage is a natural hardwood sprung floor, with medium density overlay in wings. The Client may not drill, lag or screw into the stage floor. Any accidental holes, scrapes and scuffs must be repaired before the final load out.

## Dance Floor

A full stage 30' x 40' (9.15 x 12.19m) Rosco (marley) black/gray reversible dance floor is available. A sprung dance floor with identical dimensions is also available. The Strand must be notified two weeks in advance if you plan on using either. There is a small charge to install and strike the marley or the sprung dance floor.

The Strand can provide six 8' ballet barres for rehearsal.

## Orchestra Pit

The orchestra pit cover is removable for a nominal fee. The Strand must be notified two weeks in advance.

The orchestra pit is 6'-0" (1.8m) deep. The pit cover is composed of steel-framed platforms with a 3/4" plywood top. It is fully removable in three different configurations. The pit is normally covered and the client must provide crew to remove and restore the pit cover if the pit is needed. Additional charges apply for a full pit cover removal and re-install. With the entire pit cover removed, the orchestra pit can accommodate approximately 18 performers and instruments, plus conductor.

There are eighteen (18) blue straight-back chairs reserved for the orchestra pit. Additional chairs may be provided at the clients' expense.





# Technical Information Packet

## Rigging

### Fly House

The Strand has a single-purchase counterweight system. There are 21 working linesets. All except the furthest upstage lineset are on T-tracks. The lock rail is located in the stage right wing. There is no loading gallery; all arbors must be loaded at stage floor level. The maximum total load on any arbor is 700 pounds and the maximum point load is 100 pounds.

Grid height is 57'-0" from stage floor. Maximum out trim on any lineset is 53'-6". Maximum in trims are typically 5'-2" but vary. Bridled linesets (linesets 7, 13, and 19) are five feet lower, and will reach the stage floor.

### Lineset Schedule

Please see Attachment E for the lineset schedule.

\*\*\* Linesets are currently rated for 600 lbs. The Strand Technical Director must approve any overhead equipment.

### Stage Weight

- 75 Full bricks (*45 pounds*)
- 59 Half bricks (*22 pounds*)
- 2 100 lb sandbags
- 8 50 lb sandbags
- 2 25 lb sandbags
- 12 25 lb black saddle-style sandbags



# Technical Information Packet

## Soft Goods

1	<b>Main valence</b> Rose Brand “Charisma” 25 oz. velour; “Claret” color	<i>Lineset 2</i>	5’6” h x 47’ w (75 lbs/ 35kg total)
1	<b>Main curtain, 2 panels</b> Rose Brand “Charisma” 25 oz. velour; “Claret” color Chain-weighted bottom hem Split at center; does not pull open side to side. ** Main curtain maximum out trim is 18’-0”	<i>Lineset 3</i>	31’h x 25’ w (325 lbs/ 150kg total)
1	<b>Show Backdrop, 3 panels</b> Rose Brand “Brava” 12 oz. velour, “Cabernet” color Fullness sewn in 3 panels – 20’, 20’, and 15’ w (with overlap)	<i>Lineset 23</i>	24’2” h x 45’w ( )
2	<b>Show Legs</b> Rose Brand “Brava” 12 oz. velour, “Cabernet” color Fullness sewn in		20’2 h x 20’w ( )
1	<b>Full Stage Blackout, 2 panels</b> Rose Brand 16 oz. black velour Chain-weighted bottom hem Split at center; does not pull open side to side	<i>Lineset 12</i>	30’ h x 25’ w (100 lbs/ 45kg per panel)
8	<b>Black Legs</b> Chain weighted bottom		30’ h x 8’ w (75 lbs / 35 kg)
3	<b>Black Borders</b>		6’ h x 44’ w (50 lbs / 25 kg)
1	<b>Black Scrim</b> Rose Brand black sharkstooth scrim	<i>Lineset 20</i>	30’ h x 50’ w (50 lbs / 25 kg) (75 lbs / 35kg with pipe)
1	<b>White Cyc</b> Rose Brand white leno	<i>Lineset 21</i>	30’ h x 50’ w (125 lbs / 60 kg) (150 lbs / 70kg with pipe)

All house goods are certified by their manufacturer as being flame resistant.

All soft goods, signs, banners, set pieces and furniture brought in by the client must be certified by the Boston Fire Department. Typically this requires **at least two weeks** before an event. More information is available online at <https://www.boston.gov/departments/fire-prevention/fire-forms-permits-applications-and-fees>.

# Technical Information Packet

## Lighting

Please refer to the house rep lighting plot (Attachment F). The rep plot may only be changed if the client provides time and crew for striking the rep plot, hanging and focusing the show plot, and striking the show plot and restoring the house rep plot. The number of crew and length of the call shall be determined by the Strand Technical Director. Additional time may be charged if the house plot is not fully restored and focused.

### Power and Dimming

- 2 ETC 400A PowerSafe Company Switches (*SL dimmer loft*)
- 2 ETC Sensor 3 touring racks – 96 dimmers each (*SL dimmer loft*)  
*\*\*16 Socapex outputs only (A-P); no GPC homerun panels*
- 1 ETC Sensor rack – 12 R20AF relay modules (*LED relays*)

### Control Board and Networking

- 1 ETC Ion 1000 w/ 2 x 10 Sub Fader Wing with 1 standard and 1 touchscreen monitor
- 1 ETC RPU w/ 1 standard monitor
- 1 ETC 4 port Gateway (*SL dimmer loft*)
- 5 1 port ETC Net3 Output Node (*Permanently placed at balcony rail, stage left, and stage right, with two spares*)
- 1 2 port ETC Net3 Input Node

### Lighting Inventory

Please see Attachment G for the current Strand lighting inventory.

### Houselights

Strand houselights are manually controlled from the stage right wing. They are not controllable by the lighting board.

### Work Lights

Work lights are controlled by two wall switches at the fly rail stage right.

### Run Lights / Stairwell Lights

A set of blue “jelly jar” style lights are on the back wall of the stage. These are controlled by a light switch on the upstage wall of the theater. The stairwell lights (which also control the loading dock lights) have both a white “fluorescent” setting and a blue “run light” setting. These are controlled by two switches near the house light controls in the stage right wing.

## FOH Lighting Positions

All lighting fixtures and accessories must be safety-chained to the appropriate pipe. Fall restraint equipment (harnesses and lanyards) must be used at all FOH lighting positions.

### Followspot Booth

100'0" to plasterline.

Two Altman Satellite followspots (575W HMI).

Standard rep colors are: Light amber (R09), dark amber (R21), light lavender (R52), light blue (L201) and dark blue (R80) plus frost (R132).

### Booth Rail Right / Left

8'-0" long pipe, beginning 25'6" feet off center.

90'0" to plasterline.

Holds approximately 5 lighting fixtures (*hung on 18" centers*).

### Balcony Rail

68'-0" long 1-1/2" pipe; splitting centerline

40'-0" to plaster line at center; 31'8" at ends.

Holds approximately 40 lighting fixtures (*hung on 18" centers*).

Repertory fixtures on the balcony rail are hung on 12" sidearms.

+15'-6" above stage floor level.



### Far Box Boom Left/Right

Holds approximately 12 fixtures

+25'-6" above stage floor level (*top position*)

+23'-6" above stage floor level (*middle position*)

+21'-6" above stage floor level (*bottom position*)

### Near Box Boom Left/Right

12'-0" high 1-1/2" pipe; however, the lowest 36" are obstructed by the box boom wall and railing.

Holds approximately six fixtures.

+25'-6" above stage floor level (*top position*)

+23'-6" above stage floor level (*middle position*)

+21'-6" above stage floor level (*bottom position*)

### Box Boom Taildown Left/Right

8'-0" high 1-1/2" pipe. Range of focus is limited due to the box boom walls.

Holds approximately three fixtures.

+12'-0" above stage floor level (*top position*)

+10'-0" above stage floor level (*middle position*)

+8'-0" above stage floor level (*bottom position*)

# Technical Information Packet

## Audio

### PA System (Mains)

The in-house sound system is an LCR (left-center-right) PA system with front fills and delays for underneath the balcony. All speakers as part of this system are permanently installed. Please see Attachment H for the precise speaker layout.

#### Left/Right Clusters

Tannoy VQ60 (*main*)

Tannoy VQDF (*downfill*)

Tannoy VQMB (*low-end*)

#### Center Cluster

Tannoy VQ100 (*main*)

Tannoy VQDF (*downfill*)

Tannoy VQMB (*low-end*)

#### Side Fills

4 Tannoy VX8.2

#### Delay Fills

4 Tannoy VX5.2 (*2 zones of 4*)



### Control Locations

The Strand FOH console is located mid-way in the orchestra seating, toward the house right side. The Strand uses a Soundcraft vi4 audio console. Visiting companies which would like to use their own audio console must pay a small charge to “bench” the house console.

### Wiring

Audio patch panels are installed at stage right, stage left, upstage center, and the orchestra pit. There are a total of 40 microphone inputs, 11 tie lines, and 8 separate speaker outputs onstage. For a complete listing, please see Attachment H.

### Audio Inventory

Please see Attachment I for the current Strand audio inventory.

### Production Intercom

The Strand has a built-in Clear-Com system for production communication. All beltpacks use 6-pin cable for wiring. There are intercom jacks at the FOH console, stage right, stage left, upstage center, orchestra pit, box boom right, box boom left, and followspot booth.

Clear-Com Channel “A” is used by stage management to talk to technical staff. Channel “B” pages to the dressing rooms. Channels “C” and “D” are reserved for technical use.

Please see Attachment J for the current Strand intercom inventory.



# Technical Information Packet

## Projection

The Strand shares its projector with the City of Boston's Special Events department. To ensure availability the projector must be requested well in advance of load-in day.

The Client will need to provide a laptop or other means of playing video to be shown on the projector. Typically projection is shown on the white cyc upstage of the performance space. Alternately, a projection screen (located on lineset 10, approximately 11' upstage of plaster line) may be flown in for film viewing.

### Projection Inventory

- 1 Sanyo PLC-ZM5000 WUXGA 5000 lumen projector  
*VGA, component video, and HDMI inputs. No DVI input.*
- 1 Sanyo LNS-S20 lens (1.7 – 2.8)
  
- 1 Projection Screen, front projection, 11'1" high x 19'8" wide
  
- 1 (Blu-Ray player)
- 1 (Preview monitor)
- 1 (HDMI splitter)
- 3 (6' HDMI cables)

## Exterior Projection

The Strand now hosts neighborhood and community arts organizations with projected artwork on the exterior of the Strand Theater.

We've incorporated all sorts of artwork, from paintings and photographs to short films. These events are typically free, since they're viewable by pedestrians in multiple locations. Some organizations have also incorporated fundraisers, awards or recognition ceremonies, and even a block party to bring attention to their group.

Typically a production may run 15 – 30 minutes and loop several times over the course of the evening. Viewing times run from 6:00 - 7:00pm (sundown) to 9:00 pm, from April to October. As these events are outside, they are entirely weather-dependent, and so scheduling several days is advisable.

Past artists and organizations we have collaborated with include Artists for Humanity, DS4SI (Design Studio for Social Intervention), Georgie Friedman, and Urbanity Dance.

All outside events must be coordinated with the City of Boston Transportation Department. Please contact the theater manager for further details.





# Technical Information Packet

## Props

### Tech Tables

Folding tables may be set house left of the front of house mix position for technical rehearsals. These must be struck before the first performance with an audience. No cables or equipment may block audience aisles or fire egress paths at any time.

### Tables and Chairs

- 10 6' folding tables
- 28 folding chairs (maroon)
- 6 29" black stools

### Lecterns

The Strand has a small, light-color lectern for client use. It is not wired for power, video, or audio.

### Music Stands and Stand Lights

- 18 Manhasset music stands (model 48)
- 5 Manhasset music stand lights

# Technical Information Packet

## Wardrobe

### Dressing Rooms

There are seven dressing rooms backstage.

The downstairs dressing room doubles as the green room. It measures 14 feet x 12 feet. It can be curtained off into two separate spaces, complete with countertops and vanity mirrors, and has two full washrooms with showers.

The crew room at the top of the stairs (facing stage right) measures 10 feet x 12 feet. This is often used as a break room, wardrobe storage, or chorus dressing room.

The next four dressing rooms measure 6 feet x 10 feet. The last dressing room (facing stage left) measures 8 feet x 12 feet. All five upstairs dressing rooms are equipped with countertops, vanity mirrors, and sinks.



### Garment Racks

The Strand provides a small (3<sup>rd</sup>) wire garment rack in each dressing room. There are four additional Z-racks for costume storage or transport.

### Laundry and Dry Cleaning

The Strand can provide an ironing board and iron for wardrobe purposes. Clients will need to provide their own sewing machine and supplies for other wardrobe necessities. There are no washing machines or dryers at the Strand.

Nearby laundromats and dry cleaners include:

Five Star Dry Cleaning  
545 Dudley Street  
Boston, MA 02119  
(617) 207-8486

Orlon's Tailoring and Dry Cleaning  
867 Dorchester Avenue  
Boston, MA 02125  
(617) 506-0420

Mooney Cleaners  
233 Bowdoin Street  
Dorchester, MA 02122  
(617) 282-1046



# Technical Information Packet

## Attachments

### Map Detailing Theater Location

- A: Policy Handbooks
- A2: Strand Emergency Evacuation Plan
  
- B1: Seating Chart, Orchestra Level
- B2: Seating Chart, Mezzanine Level
- B3: Seating Chart, Balcony Level
  
- C: Ground plan of the Theater, Street Level
  
- D: Centerline Section of the Theater
  
- E: Lineset Schedule
  
- F: Lighting Rep Plot
- F2: Lighting Paperwork
- F3: Multicable Distribution
- F4: Network and DMX Index
  
- G: Lighting Inventory
  
- H: Repertory Speaker Layout
  
- I: Audio Inventory
  
- J: Intercom Inventory



## **Strand Theater – General Policies**

11/01/19

### **Access to the Theater**

Doors to the theater may not be left propped open and unattended. Clients should appoint someone to act as a point of contact for their cast and crew to provide access to the building.

If the need for additional time arises, the Strand staff will not refuse reasonable requests. However, this time will be billed at overtime rates. There is a firm end of day / clear of venue time of 11:00 pm.

### **Smoking, Food, and Drink**

Smoking is forbidden on all City of Boston property.

Food and drink is not allowed in the auditorium of the theater, except bottled water.

Alcoholic beverages may not be served unless through the Strand concessions.

### **Production Management**

Presenters are responsible for informing all personnel of the Strand policies.

Clients are responsible for their own expendables (tape, tie line, etc.)

Only Strand staff members have access to locked areas of the building. Keys will not be distributed to visiting companies.

WiFi is not available at the Strand.

### **Carpentry**

All overhead rigging must be pre-approved by the Strand technical director before load-in.

Drilling, stapling and lagging into the stage floor and walls is not allowed.

Sets may be assembled in the space, but not constructed.

Soft goods must have flame-retardancy certificates from the City of Boston. Pyrotechnics and atmospheric effects (such as haze and fog) are strictly forbidden.

Hard hats must be worn when work is being performed overhead (in the grid or the Genie).

### **Audio**

Only Strand approved staff may operate the audio console.

Microphone and speaker requests must be made two weeks prior to the event.

### **Lighting**

Any changes to the Strand repertory plot must be approved by the Strand technical director no less than two weeks prior to your event.

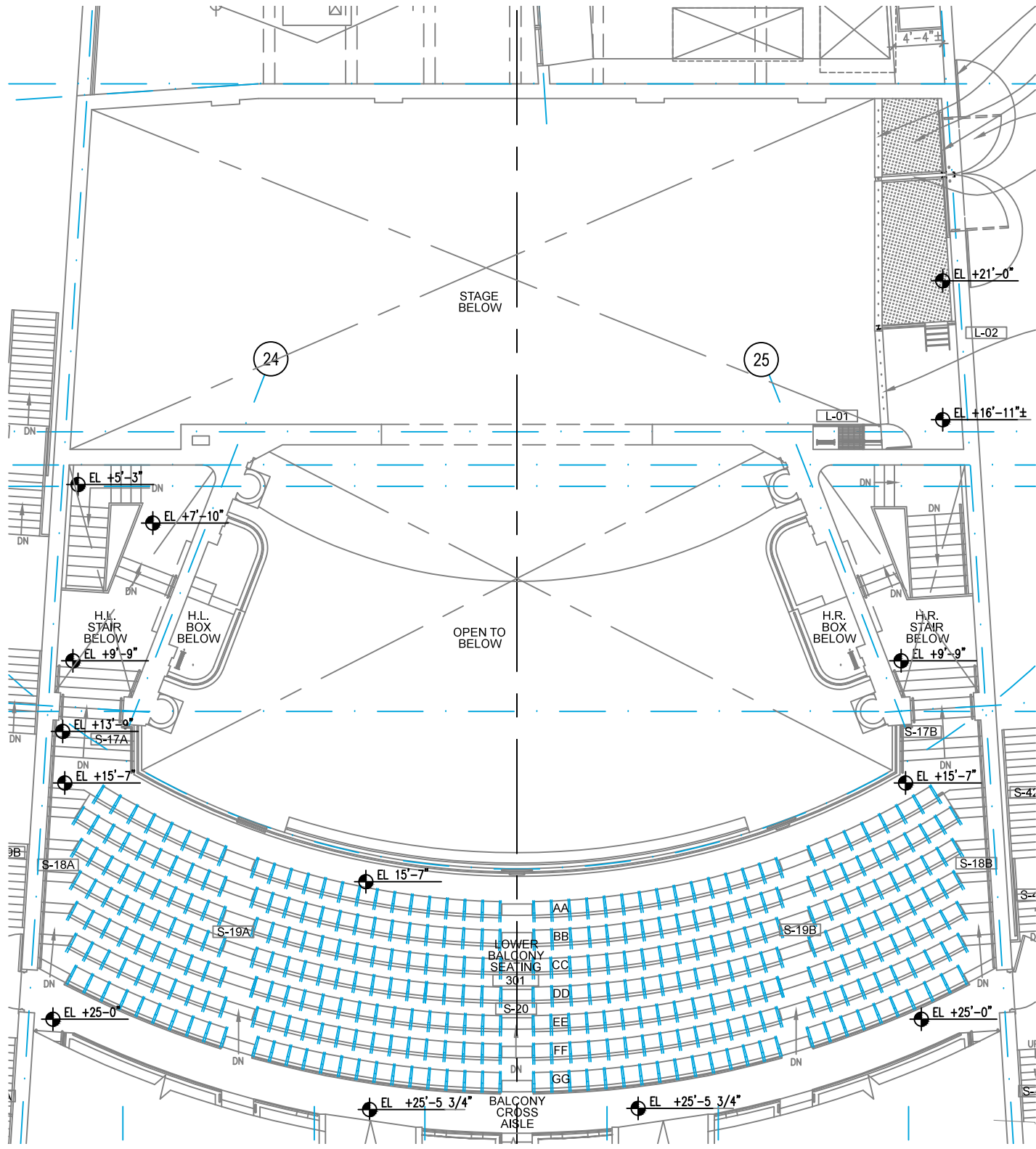
Electricians working in the box boom positions must wear fall-protection equipment.

### **Projection**

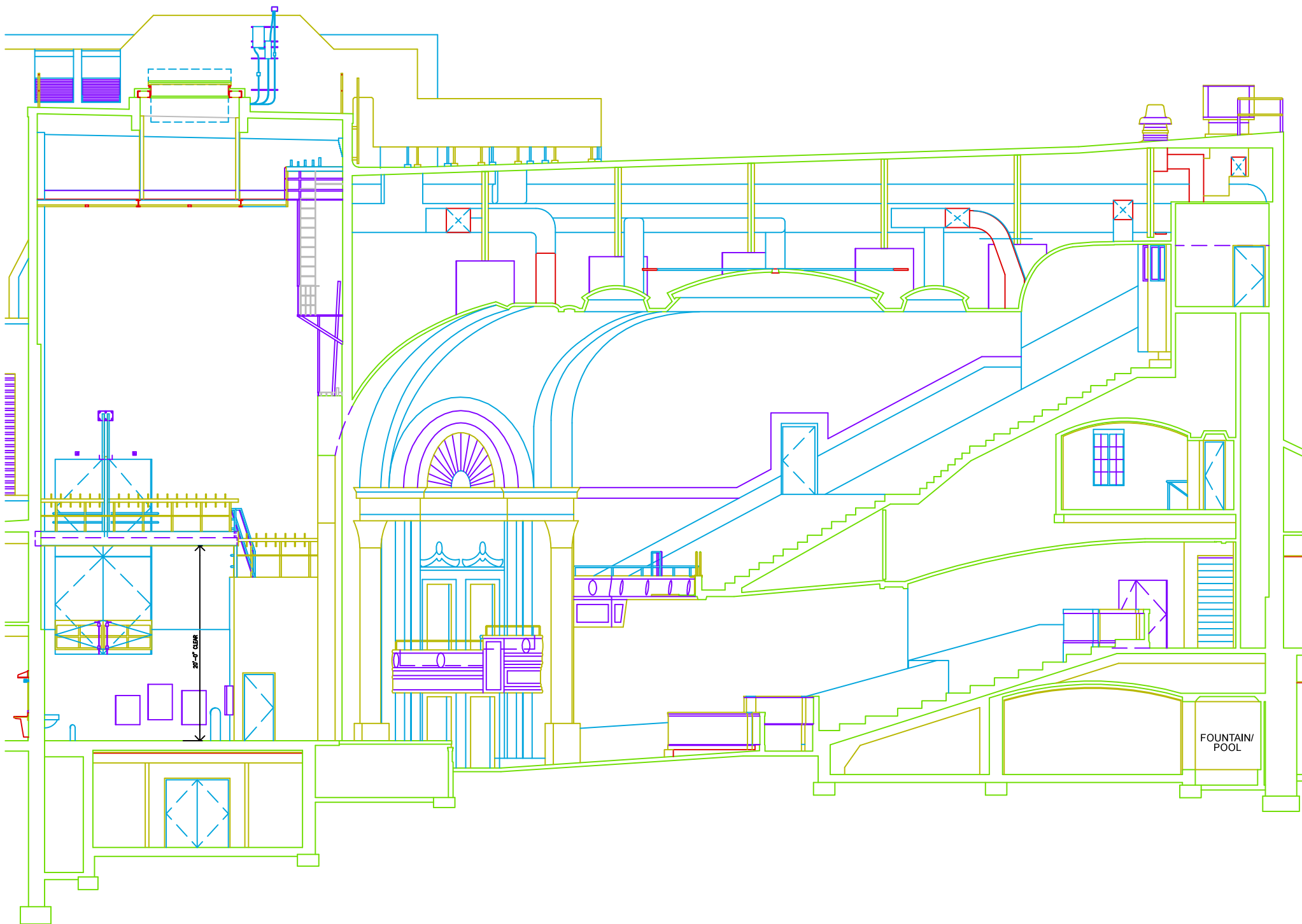
Use of the Strand projector must be approved no less than two weeks prior to the event. The client is responsible for providing their own content (video) and playback.

### **Videography/Photography**

Camera tripods and cables may not block house aisles or egress to fire exits.



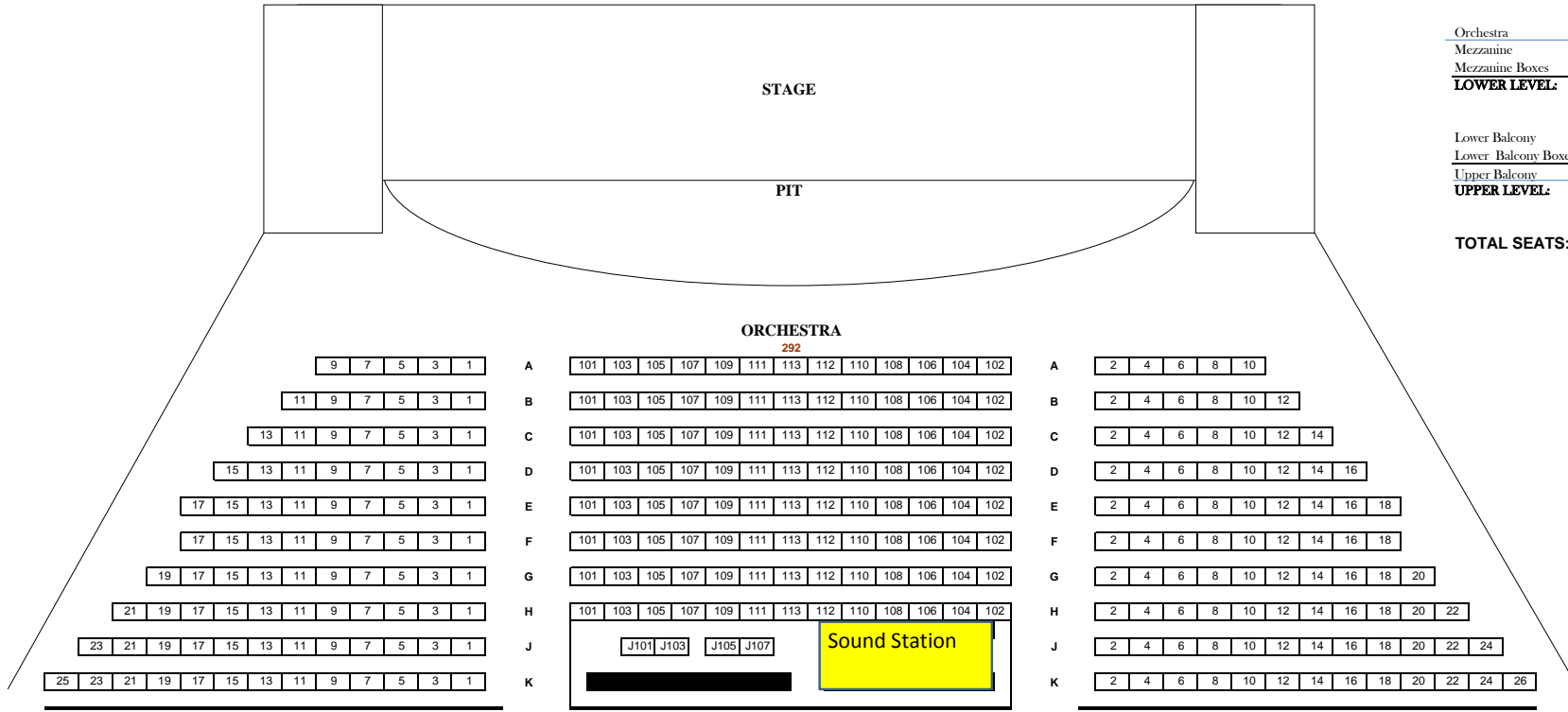




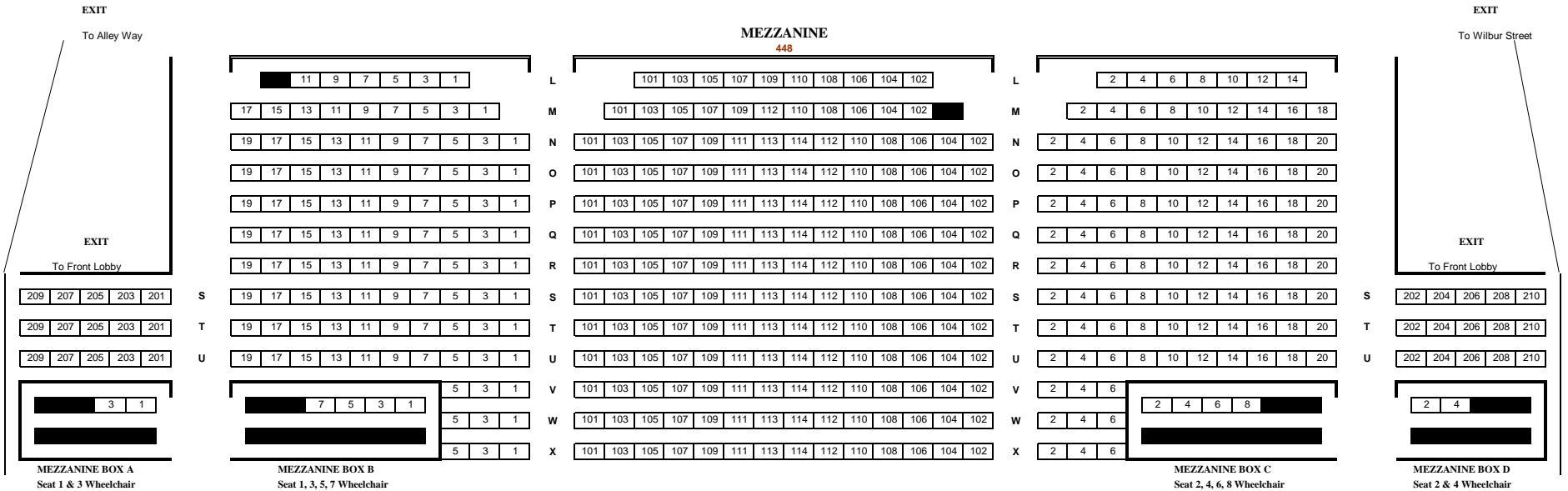
Orchestra 292  
 Mezzanine 419  
 Mezzanine Boxes 12 with chapter  
**LOWER LEVEL: 723**

Lower Balcony 278  
 Lower Balcony Boxes 10 with chapter  
 Upper Balcony 385  
**UPPER LEVEL: 673**

**TOTAL SEATS: 1396**



J 101, J 103, J 105, J 107 Wheelchair Option



14 Optional Mezzanine Box Seats in Box A & B will replace Wheelchairs  
 OR 12 Wheelchair standard (Optional seats by Lessee Requ

EXIT To Second Floor Lobby

EXIT To Wilbur Street

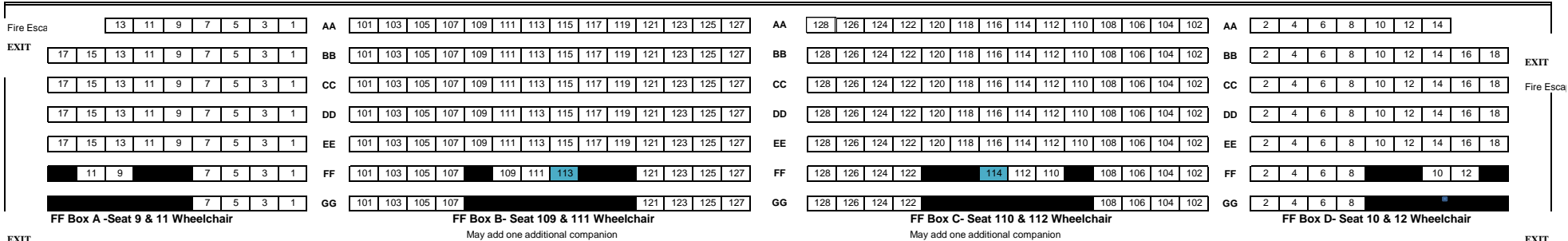
EXIT To Wilbur Street

EXIT To Wilbur Street

< Six Door Exits to Employee Lot on Wilbur Street >

LOWER BALCONY

296

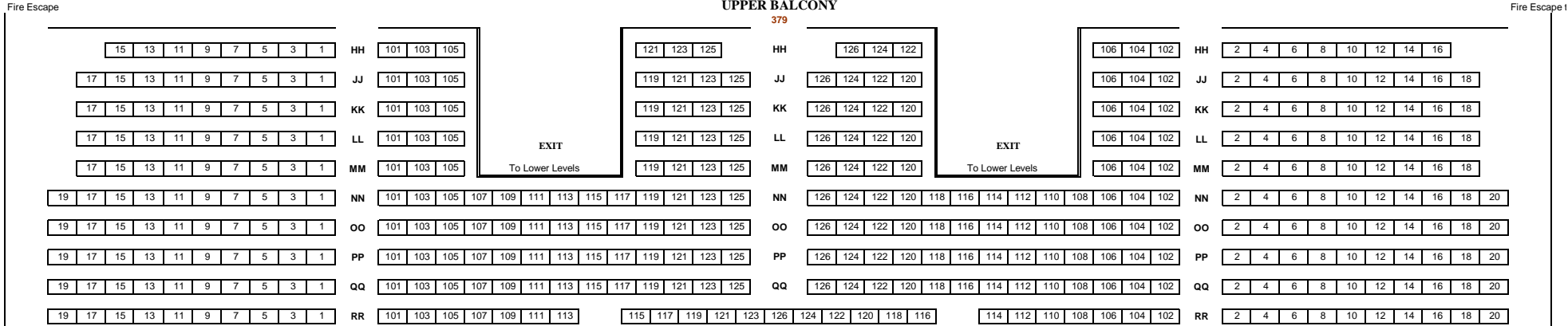


EXIT

EXIT

UPPER BALCONY

379



EXIT

EXIT

# STRAND Lineset Schedule

Lineset	Distance from PL	Standard Rep	Trim	Weight in / Bricks	Lbs	Notes
X	0'0"	PROSCENIUM LINE				
FC	0'5"	FIRE CURTAIN				
1	0'-11"					44'0" batten
2	1'-6"					"Long Arbor"
3	2'-1"					
4	3'-10"	<i>Not Operable</i> - No Pipe				
5	5'-0"					
6	5'-7"					
7	6'-2"					Bridled
8	6'-9"					48'10" batten
9	8'-7"					"long arbor"
10	10'-10"					53'4" batten
11	11'-5"					
12	12'-0"					
13	13'-9"					Bridled
14	14'-4"					
15	15'-6"					"long arbor"
16	16'-8"	<i>Not Operable</i> - No Pipe				
17	17'-3"					
18	17'-10"					
19	20'-2"					Bridled
20	21'-4"					
21	21'11"					
22	23'-8"					
HEMP	24'-3"					
23	25'-5"					
	27'8"	BACK WALL OF THEATER				

## Total Strand Weight

\*Main Curtain and Valance not counted

75 - Full Bricks, 40-55lbs each

45 - Half Bricks, 15-25lbs each

**Strand Rep spike color is purple**

Spiked at top of rope lock

**DO NOT REMOVE**

## IMPORTANT NOTES

- \* Lineset Max **Load** weight capacity is 600lbs
- \* Battens are 48'1" long unless noted
- \* Bridled pipes hang 5' lower from grid height
- \* If hanging moving lights, only use Bridled lineset
- \* Linesets must be returned to Standard Rep at end of show



# DORCHESTER, MA Strand Theater Lighting Inventory

5/01/21

## Dimming and Control

- 2 Sensor 96 CEM 3+ touring racks
- 96 Sensor D20 (2 x 20A) dimmer modules, total of 192 dimmers
- \*16 Socapex outputs (A-P); no GPC homerun panels.
- 1 ETC Ion 1000 w/ 2x10 Fader Wing and 2 standard monitors
- 1 ETC RPU w/ 1 standard monitor
- 1 ETC 4 port 5-pin Gateway - SL Mid Gal
- 5 1 port ETC Net3 Output Node
- Typically placed at followspot booth, balcony rail, stage left, and stage right, and upstage center*
- 1 2 port ETC Net3 Input Node

## Lighting Instruments

\* All ETC Source Four Ellipsoids and PARs are lamped at 750w unless otherwise noted

	<u>Total</u>	<u>FOH Rep</u>	<u>Overstage Rep</u>	<u>Spare</u>
ETC Source Four 19 <sup>0</sup>	30	25	0	5
ETC Source Four 26 <sup>0</sup>	30	14	16	0
ETC Source Four 36 <sup>0</sup>	40	0	40	0
ETC Source Four PAR	24	0	23	1
ETC Source Four PAR, white	18	16	0	2
Elektralite 1018 (LED Par)	24	8	15	1
* L5-20 connector				
Altman Groundcyc	5	0	4	1
<i>4 circuit, lamped at 1k (2000w/ circuit)</i>				
L&E 8' MR-16 Ministrip	5	0	5	0
<i>4 circuit, lamped at 75w 36<sup>0</sup> EYC</i>				
Altman Satellite I	2	2	0	0
575W HMI Followspot				



# Stand Theater Lighting Inventory

07/21/21

## 6-Circuit Multicable (Lex 12/19)

	<u>Total</u>	<u>FOH Rep</u>	<u>Overstage Rep</u>	<u>Spare</u>
100' Multicable	9	0	9	0
75' Multicable	14	0	8	6
50' Multicable	22	0	11	11
25' Multicable	21	9	7	5
10' Multicable	1	0	0	1
Stagepin break-ins, 6' straight	10	0	0	10
Stagepin break-outs, 6' straight	34	9	24	1
Twistlock (L5-20) break-outs	2	0	0	2
Edison break-out	2	0	0	2

## Stagepin Cable (12/3 SJOOWA)

	<u>Total</u>	<u>FOH Rep</u>	<u>Overstage Rep</u>	<u>Spare</u>
100' stagepin cable	5	0	0	5
50' stagepin cable	10	0	0	10
25' stagepin cable	15	0	0	15
10' stagepin cable	25	4	4	21
5' stagepin cable	25	0	2	23
Stagepin twofers	20	0	0	20
“Reversed” stagepin twofers	10	0	0	10

## Twistlock (L5-20) Cable – *used with Elektralite LEDs*

	<u>Total</u>	<u>FOH Rep</u>	<u>Overstage Rep</u>	<u>Spare</u>
100' twistlock cable	4	0	4	0
50' twistlock cable	15	0	0	15
25' twistlock cable	10	0	0	10
10' twistlock cable	6	0	3	3
5' twistlock cable	8	0	5	3
Twistlock threefers	12	0	10	2
Twistlock twofers	4	4	0	0

## DMX / Data cable

	<u>Total</u>	<u>FOH Rep</u>	<u>Overstage Rep</u>	<u>Spare</u>
100' DMX cable	5	0	5	0
75' DMX cable	5	0	5	0
50' DMX cable	5	0	5	0
25' DMX cable	5	0	0	5
10' DMX cable	25	0	15	10
5' DMX cable	30	6	0	24

# Stand Theater Lighting Inventory

07/21/21

## DMX Adapters

5-pin DMX/M to 3-pin XLR/F	2
5-pin DMX turnaround (pin)	1
5-pin DMX turnaround (receptacle)	1
DMX Terminators	10

## Edison Cable (12/3 SOOWA, with NEMA 5-15 connectors)

1	100' Edison cable
5	50' Edison cable
5	25' Edison cable
5	10' Edison cable

## Adapters

6	Stagepin plug -> L5-20 receptacle
25	Stagepin receptacle -> L5-20 plug
1	L5-20 plug -> Edison receptacle
2	L5-20 receptacle -> Edison plug
7	Stagepin plug -> Edison receptacle
1	Stagepin receptacle -> Edison plug

## Lighting Accessories

200	Source Four gel frames (6.25" x 6.25")
32	Source Four Par gel frames (7.5" x 7.5")
56	Altman Cyc gel frames (8 3/4" x 13")
100	Ministrip gel frames: (5 3/4" x 3 1/4")
24	Source Four gobo holder, "A" size
8	Source Four gobo holder, "B" size
3	Source Four glass gobo holder, "A" size
36	6.25" top hats
30	7.5" half hats
10	7.5" barndoors
4	Source Four drop-in irises

## Iron

148	Theatrical c-clamps
148	Safeties
30	Standard 12" sidearm with tee
36	Standard 18" sidearm with tee
18	Safer Sidearm w/ 18" x 1/2" pipe and tee
22	Safer Sidearm for 1 1/2" pipe
6	50 lb. boom base
6	10'0" 1-1/2" schedule 40 black iron pipe



# Strand Theater Audio Inventory

02/01/20

## FOH Console

Soundcraft Vi4 \*96 channels: *limited to 40 inputs onstage*

## FOH Rack

Soundcraft Local Rack w/ optical stage box link.

## Processing

Symetrix SymNet Edge (input and output DSP)

## Amplification

Lab Gruppen C 88:4

Lab Gruppen C 28:4

Lab Gruppen C 16:4

Lab Gruppen C 20:8 X

## PA System (Mains)

LCR System with front fills and delays for underneath the balcony. All speakers as part of this system are permanently installed. Clients may not access or make changes to the processing equipment.

### Left/Right Clusters

Tannoy VQ60 (main)

Tannoy VQDF (downfill)

Tannoy VQMB (low-end)

### Center Cluster

Tannoy VQ100 (main)

Tannoy VQDF (downfill)

Tannoy VQMB (low-end)

### Side Fills

4 Tannoy VX8.2

### Delay Fills

4 Tannoy VX5.2: 2 zones of 4

## Playback

Tascam CD player w/ iPod dock and 1/8" auxiliary input (at local rack, FOH)

# Stand Theater Audio Inventory

02/01/20

## Monitors

- 4 EAW MW-10
- 4 EAW SM-122
- 2 Community speakers

## Subwoofers

- 2 EAW 850 dual 18" subwoofers, non-powered

## Microphones

- 8 Shure SM-57 handheld dynamic, cardioid
- 8 Shure SM-58 handheld dynamic, cardioid
- 2 Shure SM-87 handheld condenser, supercardioid
- 2 Shure SV-200 handheld cardioid, switched

## Wireless Microphones *\*additional rental - \$40/each*

- 2 Shure UR2/SM-58
- 2 Shure UR1-J5 body packs with 2 - WL184 lavalier mic

## Microphone Stands

- 6 Desktop mic stands
- 8 Straight mic stands, flat bases
- 12 Tall tripod mic stands with booms
- 5 Short tripod mic stands with booms

## XLR (Microphone) Cable

- 6 50' XLR cable
- 40 25' XLR cable
- 14 15' XLR cable
- 10 10' XLR cable

## SpeakOn Cable (NL4)

- 1 75' SpeakOn cable
- 3 50' SpeakOn cable
- 10 25' SpeakOn cable
- 1 15' SpeakOn cable

## 1/4" Cable -- TS

- 2 50' TS cable
- 3 25' TS cable
- 2 15' TS cable
- 8 10' TS cable
- 4 5' TS cable

# Stand Theater Multicable Distribution

09/01/18

Position	Multicable	Dimmers	Notes
<b>RACK ONE</b>		<b>1 - 96</b>	<b>All D20 cards</b>
*Balcony Rail (HR)	A	1 – 6	6' stagepin breakout
*Balcony Rail (HR/Ctr)	B	7 – 12	10' Multi + 6' stagepin breakout
*Balcony Rail (HL)	C	13 – 18	6' stagepin breakout
*Far Box Boom HL	D	19 – 24	6' stagepin breakout
*Far Box Boom HL	E	25 – 30	6' stagepin breakout
*Near Box Boom HL	F	31 – 36	6' stagepin breakout
*Far Box Boom HR	G	37 – 42	6' stagepin breakout
*Far Box Boom HR	H	43 – 48	6' stagepin breakout
*Near Box Boom HR	I	49 – 54	6' stagepin breakout
1E (SL)	J	55 – 60	6' stagepin breakout
1E (SR)	K	61 – 66	6' stagepin breakout
2E (SL)	L	67 – 72	6' stagepin breakout
2E (SR)	M	73 – 78	6' stagepin breakout
3E (SL)	N	79 – 84	6' stagepin breakout
3E (SR)	O	85 – 90	6' stagepin breakout
<i>Spare</i>	P	91 - 96	

All FOH positions (marked with a \*) require a 25' multicable from the pass-through to the dimmer rack. All other multicable lengths are from the dimmer rack to the lineset batten. Breakouts on lineset battens are typically placed at 1/4 stage right or 1/4 stage left, as noted. Breakouts on booms are placed at approx.. 9'0" above stage floor.

# Stand Theater Multicable Distribution

09/01/18

Position	Multicable	Dimmers	Notes
<b>RACK TWO</b>		<b>101 - 196</b>	<b>All D20 cards</b>
Boom 1 SL	AA	101 – 106	6' Stagepin Breakout
Boom 2 SL	BB	107 – 112	6' Stagepin Breakout
Boom 3 SL	CC	113 – 118	6' Stagepin Breakout
Boom 4 SL	DD	119 – 124	6' Stagepin Breakout
Boom 1 SR	EE	125 – 130	6' Stagepin Breakout
Boom 2 SR	FF	131 – 136	6' Stagepin Breakout
Boom 3 SR	GG	137 – 142	6' Stagepin Breakout
Boom 4 SR	HH	143 – 148	6' Stagepin Breakout
4E (SL)	II	149 – 154	6' Stagepin Breakout
4E (SR)	JJ	155 – 160	6' Stagepin Breakout
<i>Spare</i>	KK	161 – 166	
<i>Spare</i>	LL	167 – 172	
<i>Spare</i>	MM	173 – 178	
Groundrow	NN	179 – 184	6' Stagepin Breakout
Groundrow	OO	185 – 190	6' Stagepin Breakout
Groundrow	PP	191 -196	6' Stagepin Breakout

All FOH positions (marked with a \*) require a 25' multicable from the pass-through to the dimmer rack.  
 All other multicable lengths are from the dimmer rack to the lineset batten.  
 Breakouts on lineset battens are typically placed at 1/4 stage right or 1/4 stage left, as noted.  
 Breakouts on booms are placed at approx.. 9'0" above stage floor.

# Stand Theater Multicable Distribution

09/01/18

Position	Multicable	Dimmers	Notes
<b>RELAY RACK</b>		<b>201 - 224</b>	<b>All R20 relays</b>
*Balcony Rail	RR	201 – 206	3' Edison breakout
1E (SL)	HR 1		
1E (SR)	HR 2		
2E (SL)	HR 3		
2E (SR)	HR 4		
3E (SL)	HR 5		
3E (SR)	HR 6		
4E (SL)	HR 7		
4E (SR)	HR 8		
5E (SR)	HR 9		
5E (SL)	HR 10		
6E (SR)	HR 11		
6E (SL)	HR 12		
Groundrow	SS		

All FOH positions (marked with a \*) require a 25' multicable from the pass-through to the dimmer rack.  
 All other multicable lengths are from the dimmer rack to the lineset batten.  
 Breakouts on lineset battens are typically placed at 1/4 stage right or 1/4 stage left, as noted.  
 Breakouts on booms are placed at approx.. 9'0" above stage floor.





DORCHESTER, MA

# Strand Theater - DMX Index

11/01/19

Location	Device	IP Address	Port	Universe	Usage	
Dimmer Loft	4-Port Gateway	10.101.50.001	1	1	Elation Opto	
			2	2		
			3	3		
			4	4		
Dimmer Loft	Elation Opto	(hard patch)	1	1	ETC Opto	
			2	1		1E
			3	1		2E
			4	1		
			T	1		
Dimmer Loft	ETC Optosplitter	(hard patch)	1	1	3E	
			2	1		4E
			3	1		5E
			4	1		
			5	1		
			T	1		
Balcony Rail	1-Port Gateway	10.101.50.105	1	5		
Boom 1 SR	1-Port Gateway	10.101.50.106	1	6		
Boom 1 SL	1-Port Gateway	10.101.50.107	1	7		
Followspot Booth	1-Port Gateway	10.101.50.108	1	8		
Groundrow	1-Port Gateway	10.101.50.109	1	9		
Box Boom SR	2-Port Gateway	10.101.50.111	1	11	Near BBR	
			2	11		Far BBR
Box Boom SL	2-Port Gateway	10.101.50.112	1	12	Near BBL	
			2	12		Far BBL